

EXPLOSIVE FULL AUTO WEEKEND

FIREPOWER

FIREPOWER

THE MAGAZINE OF EXOTIC WEAPONRY

48469

SEPT. 1984

U.S. \$2.95

CAN. \$3.50

EXCLUSIVE
REPORT

FIRST TIME EVER PHOTOGRAPHED!

DIRECT FROM THE
AMERICAN UNDERGROUND



.45 MINUTEMAN SMG

BIG BORE "SNUBBIES"

.44 MAG. S&W 2½" M29

.44 SPL. 2¾" CHARTER
BULLDOG

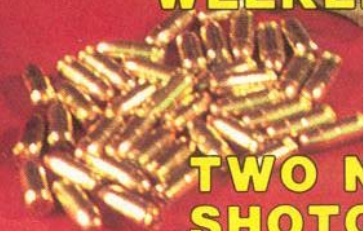


FAMILY
FIREPOWER
WEEKEND

UZI

FULL AUTO
CONVERSIONS:

MICRO UZI/UZI CARBINE



TWO NEW
SHOTGUNS



WIN
THIS GUN

SEE PAGE 59



MICRO ~~MINI~~ UZI



Our Fiendishly Clever Ordnance Expert Turns The Uzi Pistol Into The Smallest Select Fire Uzi Ever

By Nolan Wilson

Let a new weapon, suitable for select fire conversion, hit the market and there seems to be an unseen race to see who can make it rock-n-roll first.

When the new Uzi pistol became available a few months ago we couldn't wait to head for the drawing board to lay out a possible design or two.

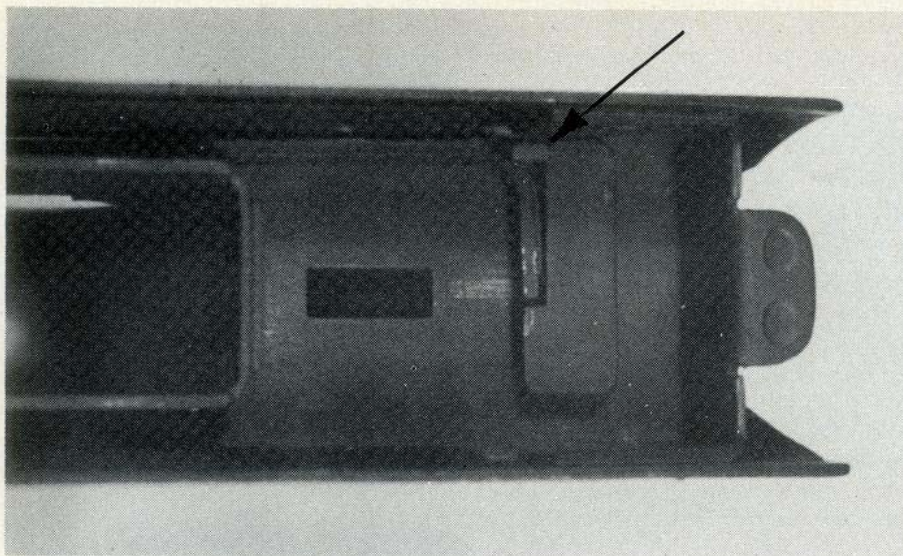
At first sight, this new pistol resembles the Mini-Uzi submachine gun. However, a closer look will reveal that, while there is that Uzi look, the pistol



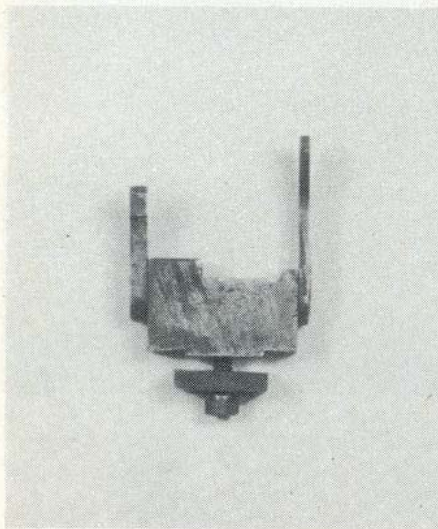
The select fire Uzi pistol before flash hider and folding stock were added.



The folding stock makes a handy front grip. Muzzle extension was added to move the muzzle blast away from forward arm.



Stripped down trigger housing showing the selector block. Note the step added to it (arrow). This prevents a "Kicker" type select lever from being used. Our conversion requires milling out this block.



A secondary sear/trip assembly, such as the one shown here, must be fabricated.

stands alone as a weapon unto itself. Being a pistol, there's no folding stock, nor is there a provision for one. The right angle through the grip and magazine well makes for a low pointing characteristic which IMI tried to overcome with grips made extra large toward the heel of the hand. This pistol doesn't look or feel like a pistol, so we decided to give it a more suitable existence as a submachine gun.

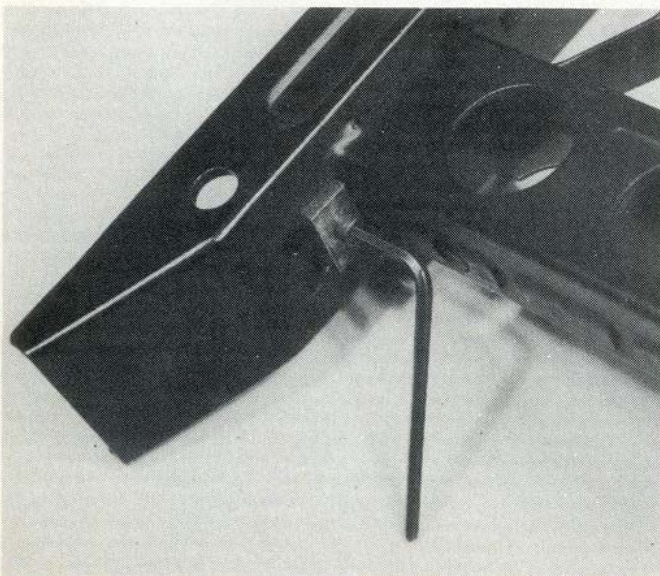
The trigger housing, with a few exceptions, is identical to that of the bigger Uzi carbine. Basically, any conversion technique used on the carbine trigger housing would work here. The potential use of such devices as a "Kicker" (see the article on converting the Uzi carbine on page 60) has been defeated by IMI's use of a stepped

block which is welded in front of the housing. Of course, this step could be milled off to use The Kicker and it would still allow normal functioning with the original select lever. Unlike the carbine, the slot where the select lever projects outside the housing must be elongated 1/4 inch to the front.

Everything seemed relatively easy until we examined the receiver and bolt. This brought into sharp focus the fact that any semi-automatic weapon which existed first in a select fire version is usually easier to convert to that configuration than a weapon which was born a semi-auto. The Uzi carbine is a good example. Due to the length of the receiver, bolt stroke, and position of the sear, all that's needed is a properly made, open firing bolt. Not so with the pistol.

When the same techniques were tried with the pistol, the bolt position, when cocked, was just behind the top round in the magazine. The results: not enough energy to strip, chamber and detonate the round. Back to the drawing board.

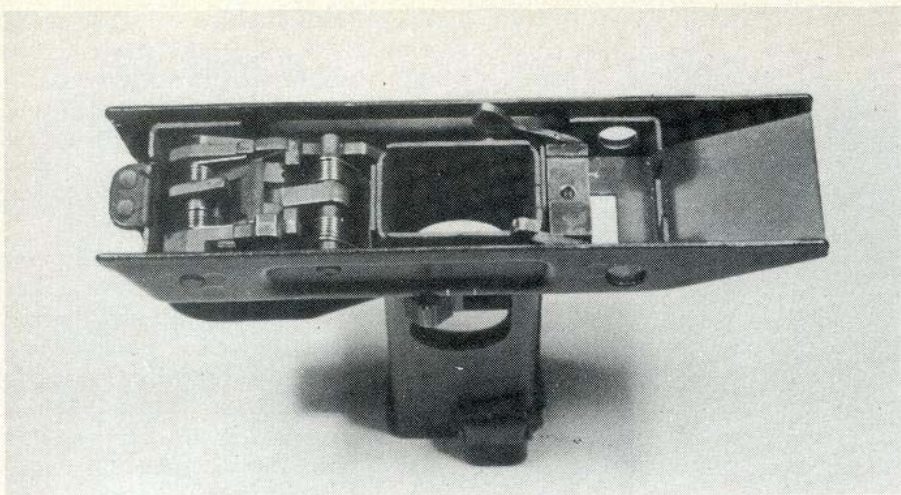
The next step was to examine closed bolt firing. A secondary sear was designed. The only place in the trigger housing to put it was occupied by the grip safety. Since the practicality of the Uzi's grip safety has always been subject to question, we felt no remorse in removing it. The secondary sear assembly is attached to the housing by a screw-clamp arrangement. A flat spring was fashioned in such a manner as to both activate the secondary sear and also retain the sear and trigger pins that had previously been retained by the grip safety.



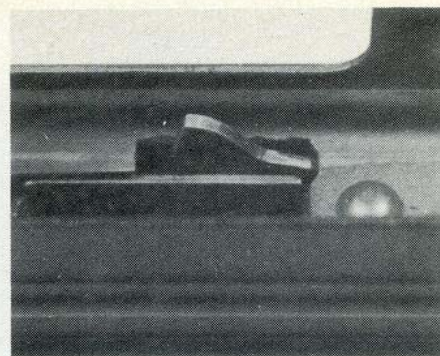
The secondary sear assembly is fastened into the area formerly occupied by the grip safety.



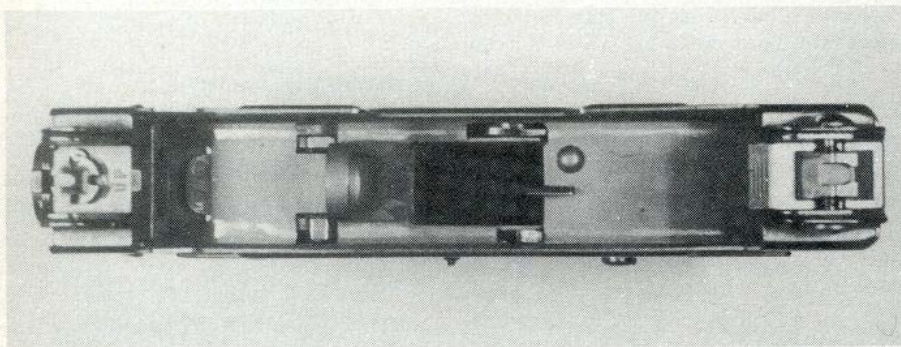
The pistol trigger housing is very similar to that of the carbine and can have the selector markings added in the same way (see Uzi carbine article on page 59).



Trigger housing reassembled with the secondary sear/trip and spring added.



The trip lever projects into the receiver where it is activated by a camming surface ground onto the bolt.

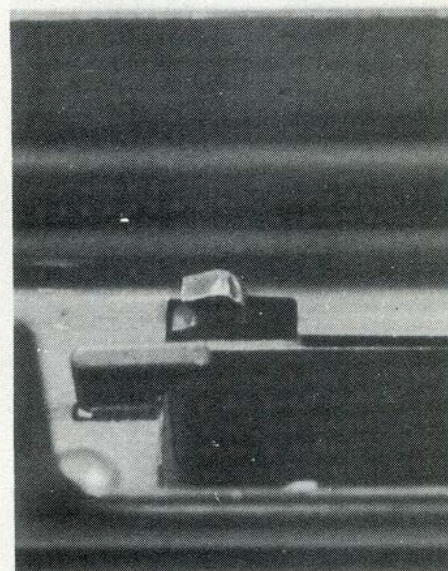


The receiver must have openings added to clear the trip and sear.

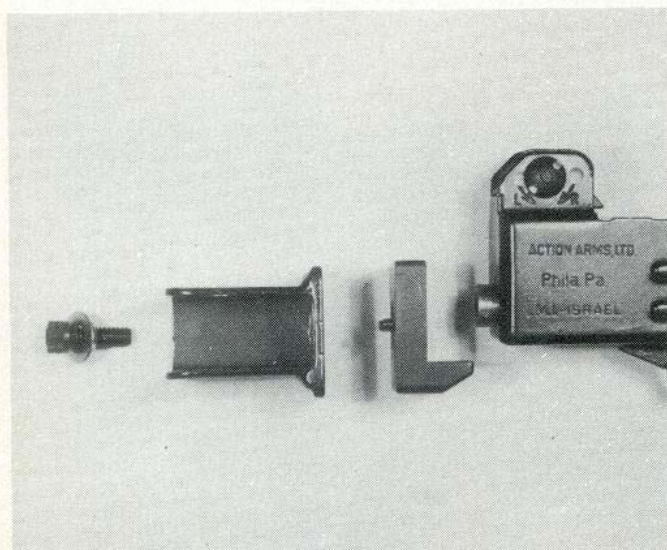
The new sear assembly has a trip lever that senses when the bolt is nearly in battery by following a new camming surface ground on the bottom rail of the bolt. The secondary sear restrains the firing pin/striker assembly by engaging a new sear surface that has been welded

on the rail of the striker. Anyone who tries to follow us in this conversion is advised to allow for a little "fine tuning" of this entire setup.

The selector functions the same as on the "grown up" Uzi submachine guns. Semi-auto and "safe" function



Note the hook-like appearance of the secondary sear. The angle of the sear surface is necessary because of the geometry of the mechanism.



An adapter block is fabricated to fit the stock to the Uzi pistol — very similar to the mounting of the Uzi carbine folding stock. However, remember that adding the folding stock to a semi-auto only pistol turns said weapon into a Class III item, regardless of the fact it cannot be fired in the full auto mode.

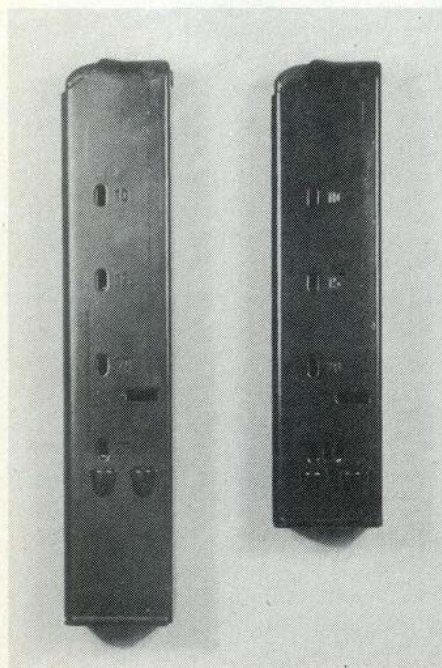


The Choate MAC 10 SAP folding stock makes a nice adaptation to the Micro Uzi.

normally. Forget any accurate full auto fire while shooting the Micro Uzi as a machine pistol. The cyclic rate (1200 rpm) and the capital T geometry necessitate the addition of a stock for anything even approaching accurate fire.

An examination of the Choate MAC 10 SAP folder from Quartermaster Sales revealed that it could be adapted. We used a method of attaching it that is similar to the one IMI uses to attach the Uzi carbine stock. An adaptor block was machined to mount the Choate stock in the proper configuration. When extended, it can be fired from the shoulder or clamped under the arm. Folded, it makes a convenient front hand hold. The only problem with this forward hand hold is the proximity of the hand to the muzzle. To overcome this, a muzzle extender was attached to the barrel with two set screws.

The finished product is pictured in this article and the complete conversion book (No. FP-9), *Micro Uzi Machine Pistol*, is available from Firepower Publications. This is not an easy conversion and unless you are a skilled machinist with proper tools, my advice is not to attempt it. If you "farm out" the machining you'll spend a fortune. Now, I'll admit that this sounds like a contradiction — we write a book about it, then tantalize you with this article, only to finish by telling you not to do it! Not exactly — we just want you to be fully aware of the difficulty of the conversion and not to blame us if you botch up a \$600 pistol!



The pistol magazine (right) holds 20 rounds. Luckily, the 25 round carbine magazine (left) will fit the pistol.

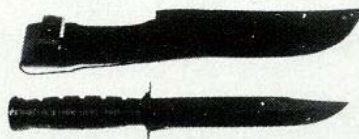
R. Benn & Associates



OFFICERS KUKRI
\$17.95



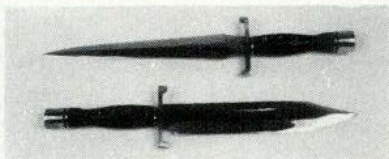
APOLLO 8x21 FIELD BINOCULARS
List \$99.00 Special \$79.95



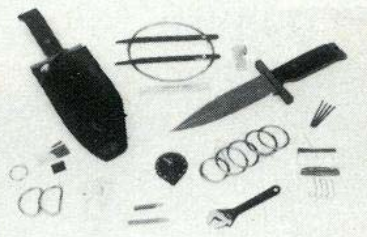
MARINE CORPS COMBAT KNIFE
From Orig. Mfg. \$21.50



MILITARY ANGLE HEAD FLASHLIGHT
Black or O.D. (Specify)
\$5.50



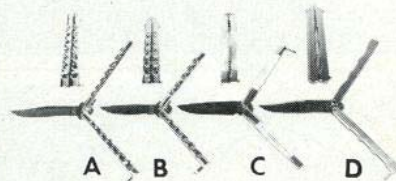
ARKANSAS TOOTHPICK \$25.00
BOWIE KNIFE \$25.00



VICTOR II SURVIVAL SYSTEM
Custom Made, sheath contains
17 tools essential to survival
\$240.00



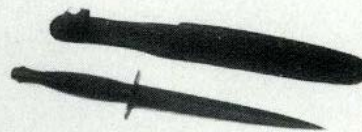
EMERGENCY WAR SURGERY HANDBOOK & MEDICAL KIT
Limited Supply
\$39.95



BUTTERFLY KNIVES
Your Choice \$29.95
A. Skeleton Handle 5"
B. Skeleton Handle 4½"
C. Polished Bone Handle 5"
D. Finger Groove Handle 5"

BALI SONG MANUAL
\$9.95

Shows use of Butterfly Knife in combat, 8½x11", 126 pages



COMMANDO DAGGER
First Quality, British \$27.95



WILDERNESS EXPLORER KNIFE
With stone, hollow handle
Black \$39.95
Camo \$49.95

For catalog send \$2.50. California residents please add 6.5% sales tax. Add for shipping & handling: U.S.A. 2%, Canada 10%, Overseas 20% — 10% Discount on all orders over \$200.00.

Dept. FP, 2458 Lomita Blvd., Suite 210, Lomita, California 90717